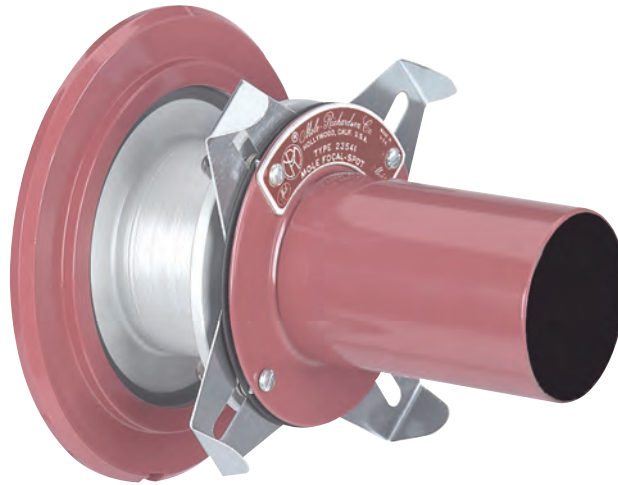




# Mole-Richardson Co.

**TYPE 23541**

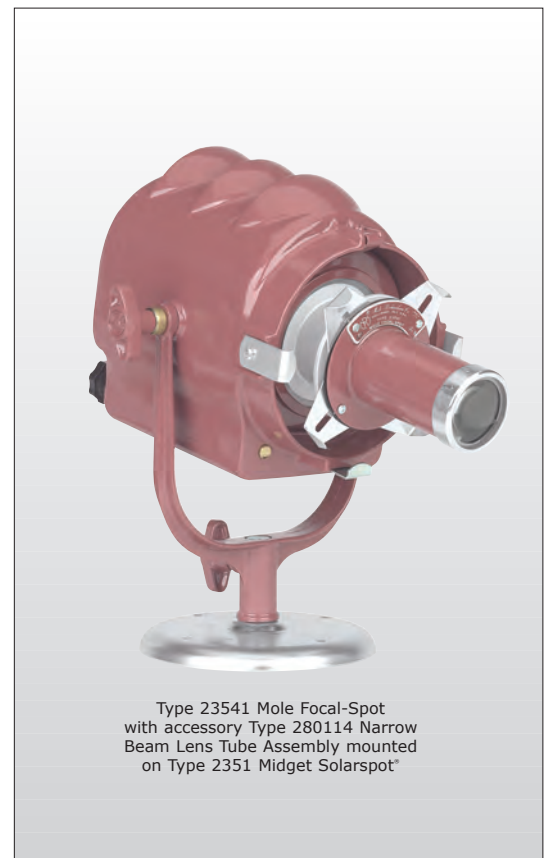
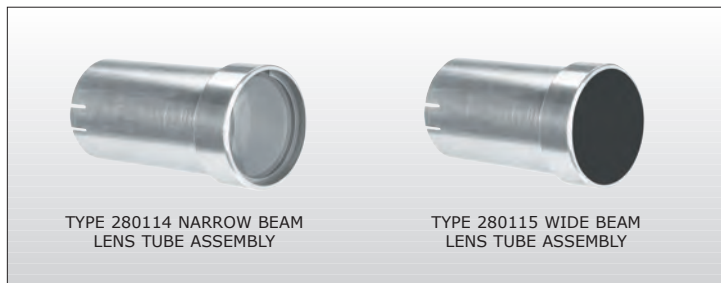
## **MOLE FOCAL SPOT**



2  
27

### **FEATURES**

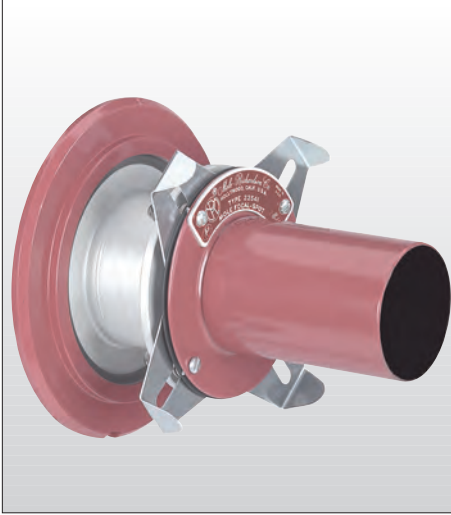
A quality Focal-Spot with high performance designed to mount in the place of the Fresnel lens in the Midget. The specially designed optical system produces a sharp outlined spot with a smooth field and a sharp cut off from the framing shutters. A slot is provided for Mole Designed Patterns and four different size aperture mats that may be inserted individually. With the addition of the 280195 Dip Stick (pattern holder), the complete line of Gam "E" Patterns (over 100 available) may be used. The lens and shutter assembly may be rotated 360 degrees. A diffuser retainer for colored gel or diffusion is available. For use in Motion Picture, Television, Theatrical Production, Digital or Still Photography where maximum intensity is required.





## TYPE 23541

### MOLE FOCAL SPOT



### SPECIFICATIONS

**FOCAL-SPOT:** Type 23541.

**NOTE:** For **Type 2351 Midget Solarspot®** remove Fresnel Lens and insert Focal-Spot in place of Fresnel Lens.

**CONSTRUCTION:** Anodized Aluminum machined parts and sheet steel spinings.

**LENS:** Two 1.69" x 2.99" (43mm x 76mm) plano-convex condenser lenses. (Not included in price of unit)

**APERTURE ASSEMBLY:** Consist of four adjustable framing shutters and guides to contain Matts and Patterns.

**SIZE:** 3" dia. x 4<sup>3</sup>/<sub>4</sub>" long.

**FINISH:** Baked maroon enamel and clear anodize.

**WEIGHT: FOCAL SPOT only.** 1 lb. 1 oz.

#### OBJECTIVE LENS ASSEMBLIES.

**Type 280114** Narrow Beam Lens Tube Assembly having one 1.61" x 3.94" (41mm x 100mm) double-convex objective lens.

**Type 280115** Wide Beam Lens Tube Assembly having one 1.58" x 2.52" (40mm x 64mm) double-convex objective lens.

**FOCUSING:** Lens Assemblies focus by retracting or extending within the travel tube.

**WEIGHT: With Narrow Beam Assembly:** 1 lb. 5 oz.

**WEIGHT: With Wide Beam Assembly:** 1 lb. 7 oz.

### 23578 Focal-Spot Kit

280109 Set of 4 Matts  
Apertures: 1/4", 1/2", 3/4", and 1 1/2".

280110 Diffuser Retainer

280114 Narrow Beam Lens Tube Assembly

280115 Wide Beam Lens Tube Assembly

280195 Pattern Holder  
(For use in GAM "E" Patterns)

### GLOBE TABLE

#### TYPE 2351 200 WATT MIDGET SOLARSPOT®

Base double contact bayonet candelabra. Burn within 30° of vertical base-down. B-12, G-16<sup>1</sup>/<sub>2</sub>, T-4 and T-8 bulbs; 1<sup>3</sup>/<sub>8</sub>" L.C.L.

Watts	Ordering Code	Color Temp.*K	Finish	Volts	Life Hours	Amps
250	ESS	2950	Clear	120	2000	2.1
200	FEV	3200	Clear	120	50	1.7
200	FEV	3200	Clear	220	100	0.9
150	ESP	2900	Clear	120	1000	1.3
100	ESR	2850	Clear	120	750	0.8

Globes not included in price of lamp.  
See price list for complete details.



### PERFORMANCE DATA

Mounted on **Type 2351 Midget Solarspot®** (with Fresnel Lens removed) using 200 watt, 120 volt, 3200°K quartz globe at maximum flood position.

Distance in Feet	Narrow Beam Using <b>Type 280114</b> Lens Tube Assembly		Wide Beam Using <b>Type 280115</b> Lens Tube Assembly	
	Light Intensity F.C.	Beam Diameter* Feet	Light Intensity F.C.	Beam Diameter* Feet
4	400	1.0	150	1.7
6	150	1.6	60	2.7
8	75	2.1	30	3.6
10	50	2.6	20	4.6
12	35	3.3	15	5.5
14	25	3.9	10	6.4
16	20	4.5	8	7.4

\*Diameters listed are maximum flat area diameters of sharp edge spot.

