

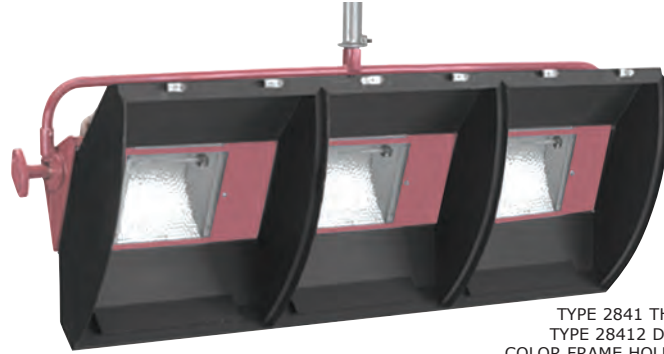


Mole-Richardson Co.

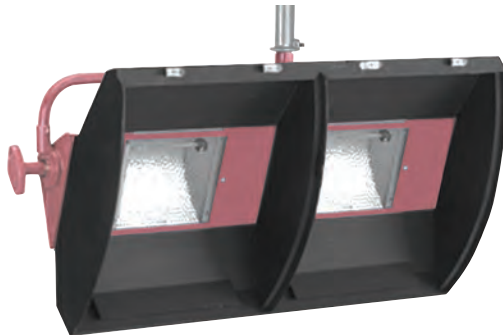
1,500 WATT MOLEFAR® SUPER QUARTZ CYC-STRIPS MULTI-CIRCUIT USING 1,500 or 1,000 WATT GLOBES



TYPE 2701 ONE-LIGHT WITH
TYPE 27012 DIRECT MOUNTING
COLOR FRAME HOLDER—SUSPENDED
OVERHEAD WITH TYPE 500356 HEAVY DUTY
BALL BEARING C-CLAMP AND ADAPTER ASSEMBLY



TYPE 2841 THREE-LIGHT WITH
TYPE 28412 DIRECT MOUNTING
COLOR FRAME HOLDER—SUSPENDED
OVERHEAD WITH TYPE 500356 HEAVY DUTY
BALL BEARING C-CLAMP AND ADAPTER ASSEMBLY



TYPE 2811 TWO-LIGHT WITH
TYPE 27912 DIRECT MOUNTING
COLOR FRAME HOLDER—SUSPENDED
OVERHEAD WITH TYPE 500356 HEAVY DUTY
BALL BEARING C-CLAMP AND ADAPTER ASSEMBLY



TYPE 2791 FOUR-LIGHT WITH
TWO TYPE 27912 DIRECT MOUNTING
COLOR FRAME HOLDER—SUSPENDED
OVERHEAD WITH TYPE 500356 HEAVY DUTY
BALL BEARING C-CLAMP AND ADAPTER ASSEMBLY

5

1

FEATURES

The new family of four Molefar® Super Quartz Cyc-Strips is designed to give improved broad coverage on taller Cycloramas from overhead. The 4-Light 4-Circuit CycStrip is designed to light from overhead and hang 6 ft. apart on the pipe, more or less depending on the height of the Cyclorama. This allows space to hang other fixtures in between. The 1-Light, 2-Light or 3-Light are also used from overhead. The color frame holders are curved to allow flow-thru air cooling between color frame and globe. Reflectors provide smooth even light field from top-to-bottom of the Cyclorama. Quartz Tungsten-Halogen globes of 1000 watts and 1500 watts are available to give you the intensity you require. Changes in color are made by switching from one circuit to another.



Mole-Richardson Co.

1,500 WATT MOLEFAR® SUPER QUARTZ CYC-STRIPS MULTI-CIRCUIT



SPECIFICATIONS

FIXTURE	CIRCUITS	Max. per circuit		RATING	120/240 volts	WIDTH INCHES	DEPTH INCHES	LENGTH* INCHES	WEIGHT POUNDS
		Amps.	Watts	Amps. Max.	Watts Max.				
2701 One-Light	1	12.5	1,500	12.5	1,500	20.50	9.75	22.25	15.00
2811 Two-Light	2	12.5	1,500	25.0	3,000	37.75	9.75	22.25	24.50
2841 Three-Light	3	12.5	1,500	37.5	4,500	51.25	9.75	22.25	32.00
2661 Four-Light	4	12.5	1,500	50.0	6,000	37.75	9.75	37.75	50.00

* Suspended from C-Clamp; measurement is from center pipe to bottom of Color Frame Holder.

SOCKET: Compressible single contact (two per globe).

SWITCH: None.

CONNECTIONS: Three extra-flexible 36" K-Fiber covered leads, Type AA, per circuit (when ordering, specify type of plugs (required)).

CONSTRUCTION: Fixture: Solid and perforated sheet steel and aluminum end castings.

YOKE: Steel tubing and brass castings.

REFLECTORS: Aluminum, special Molebrite® Alzak surface.

SIZE: Includes fixtures, yokes and Color Frame Holders. See chart.

FINISH: Baked maroon enamel and flat black.

WEIGHTS: Includes fixtures, yokes and Color Frame Holders. See chart.

FILTER FRAME: 1 lbs. 5 oz.

ACCESSORIES

27012 Direct Mounting Color Frame Holder (One-Unit)

27912 Direct Mounting Color Frame Holder (Two-Unit)

27934 Color Filter Frame

Direct Mounting Color Frame Holder needed for mounting. One per globe.

28412 Direct Mounting Color Frame Holder (Three-Unit)

81861 Safety Cable

500356 Heavy Duty Ball Bearing C-Clamp and Adapter

500403 Adjustable Hanger Group (Refer to Adapter Section)

500424 Telescoping Hanger Group (Refer to Adapter Section)

GLOBE TABLE

Base, recessed single contact. Burn horizontal $\pm 4^\circ$ T-3 or T-4 bulbs; 6 ⁹/₁₆" M.O.L.

Watts	Ordering Code	Color Temp. K°	Finish	Volts	Life Hours	Amps
1500	FDB	3200	Clear	120	400	12.5
1500	FGT	3200	Clear	120	400	12.5
1000	FFT	3200	Clear	120	500	8.3

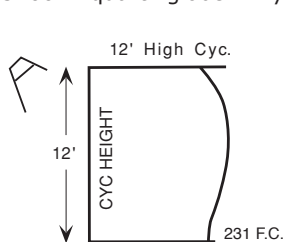
Globes not included in price of lamp.
See price list for complete details.



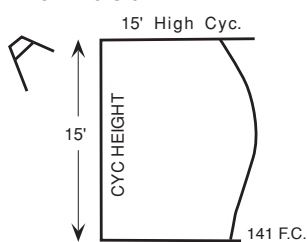
Type 500356
Heavy Duty Ball
Bearing C-Clamp
and Adapter

PERFORMANCE DATA

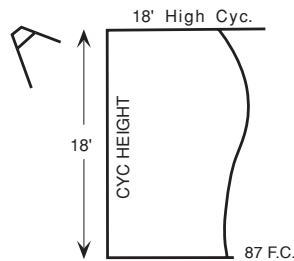
Using FDB-Q1500T4/4CL, 1,500 watt, 120 volt, 3200°K quartz globe in Type 2701 Molefar®.



MOUNTING:
Cyc. Height: 12 Feet
Distance from Cyc.: 5 Feet
Spacing on Centers: 5 Feet



MOUNTING:
Cyc. Height: 15 Feet
Distance from Cyc.: 6.5 Feet
Spacing on Centers: 6.5 Feet



MOUNTING:
Cyc. Height: 18 Feet
Distance from Cyc.: 8 Feet
Spacing on Centers: 8 Feet

