



ADAPTERS SPUDS

TYPE 500185

CAMERA ADAPTER

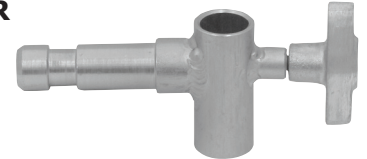
Allows camera with 1/4-20 threaded mounting hole to be mounted on any Baby Size Stand or Adapter with 5/8" dia. spud.



TYPE 500311

RIGHT ANGLE BABY SPUD ADAPTER

Mounts on 5/8" dia. stand spud allowing lamp yoke to attach to stand riser at right angle, or horizontal plane. Accepts 5/8" dia. yoke socket.



TYPE 500786

CAMERA ADAPTER

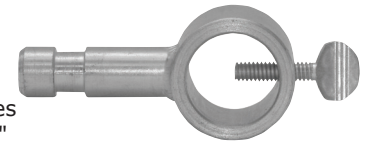
Allows camera with 3/8-16 threaded mounting hole to be mounted on any Baby Size Stand or Adapter with 5/8" dia. spud.



TYPE 500327

BABY SPUD POLE ADAPTER

Fits 1/2" dia. to 1 1/16" dia. poles to support fixtures having 5/8" dia. yoke sockets. May be positioned and repositioned by twist of thumb screw.



TYPE 500935

VIDEO CAMERA LAMP SPUD ADAPTER

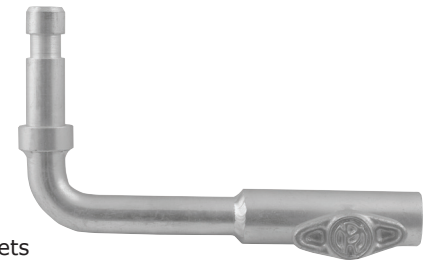
Allows small lighting fixture with 5/8" dia. yoke socket to be mounted to Video Camera via 1/4-20 stud.



TYPE 70112

RIGHT ANGLE BABY SPUD ADAPTER (6")

Adapts lighting fixture with 5/8" dia. yoke sockets to a Baby Size 5/8" dia. spud. Gives a 6 inch right angle extension.



TYPE 500962

VIDEO CAMERA LAMP SPUD ADAPTER

Allows small lighting fixture with 5/8" dia. yoke socket to be mounted to Video Camera via 3/8-16 stud.



TYPE 55018

STACKING SPUD

Adapts two 5/8" dia. yoke socket.





Mole-Richardson Co.

ADAPTERS SPUDS

TYPE 7545 LAMP SPUD

Adapts fixture with $\frac{5}{8}$ " dia. yoke socket to $\frac{1}{4}$ -20 male thread.



TYPE 23523 $\frac{5}{8}$ " to $\frac{3}{8}$ " SPUD ADAPTER

Adapts fixture with $\frac{5}{8}$ " dia. yoke socket to any $\frac{3}{8}$ " dia. stand riser or hanger adapter spud.



TYPE 500787 LAMP SPUD

Adapts fixture with $\frac{5}{8}$ " dia. yoke socket to $\frac{3}{8}$ -16 male thread.



TYPE 500437 $\frac{5}{8}$ " to $\frac{1}{2}$ " SPUD ADAPTER

Adapts fixture with $\frac{5}{8}$ " dia. yoke socket to a $\frac{1}{2}$ " dia. stand riser.



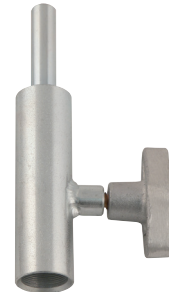
TYPE 500179 CASTER POST

Substitute for $\frac{7}{16}$ -14 caster nut on stand leg to mount lamps with $\frac{5}{8}$ " dia. yoke socket.



TYPE 55553 $\frac{3}{8}$ " to $\frac{5}{8}$ " SPUD ADAPTER

Adapts fixture with $\frac{3}{8}$ " dia. yoke socket to a Baby Size $\frac{5}{8}$ " dia. stand riser.



TYPE 50073 JUNIOR TO BABY STAND ADAPTER

Adapts any Junior Size Stand with $\frac{1}{8}$ " dia. yoke pin socket to a Baby Size $\frac{5}{8}$ " dia. spud.



TYPE 500441 $\frac{1}{2}$ " to $\frac{5}{8}$ " SPUD ADAPTER

Adapts fixture with $\frac{1}{2}$ " dia. yoke socket to a Baby Size $\frac{5}{8}$ " dia. stand riser.

