



ADAPTERS WALL PLATES

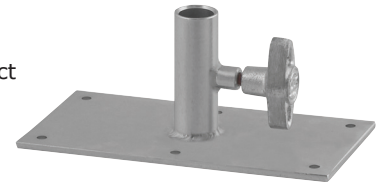
TYPE 500141 BABY WALL PLATE (4" x 6")

Nails to top of set or wall with $\frac{5}{8}$ " dia. spud.



TYPE 500804 PLATE ADAPTER

Mounts on any Baby Size Stand or Adapter for support of any object which can be secured to plate with six $\frac{3}{16}$ " dia. holes.



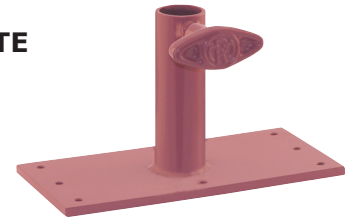
TYPE 500771 BABY WALL PLATE (Thin Base 3" x 6")

$\frac{5}{8}$ " dia. spud mounted on a thin ($\frac{1}{8}$ " thick) base for nailing to any flat surface such as side or top of set.



TYPE 1721 JUNIOR WALL PLATE (4" x 8")

Nails to top of set or set wall. Accepts $1\frac{1}{8}$ " dia. spud.



TYPE 500666 BABY WALL PLATE WITH SAFETY CHAIN

To be nailed to a flat surface. A $\frac{5}{8}$ " dia. spud with hole for cotter pin, and with a safety chain, provide an ideal unit for mounting lighting fixtures on overhead surface.



TYPE 500229 SET WALL BRACKET (4" x 4" x 8")

Nails to top of set wall. Accepts $1\frac{1}{8}$ " dia. yoke pin.



TYPE 500547 RIGHT ANGLE BABY WALL PLATE (5" x 5")

Nails or screws to any flat surface. Is a device for mounting fixtures with the Baby Size $\frac{5}{8}$ " dia. yoke sockets, in areas where stands cannot be used.



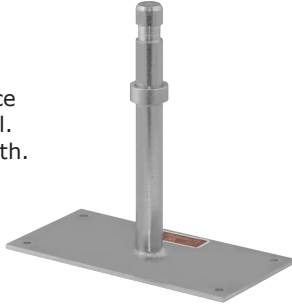


Mole-Richardson Co.

ADAPTERS WALL PLATES

TYPE 500750 BABY WALL PLATE (6")

To be nailed to any flat surface such as side or top of set wall.
 $\frac{5}{8}$ " dia. spud 6 inches in length.
Base 3" x 6".



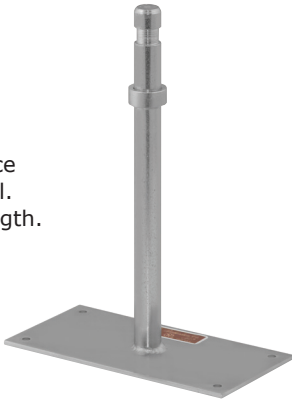
TYPE 2355 BASE PLATE (5 1/2" Diameter)

Support plate for mounting small lighting fixtures on flat surface.



TYPE 500809 BABY WALL PLATE (13")

To be nailed to any flat surface such as side or top of set wall.
 $\frac{3}{8}$ " dia. spud 13 inches in length.
Base 3" x 6".



TYPE 500764 BABY WALL PLATE (18")

To be nailed to any flat surface such as side or top of set wall.
 $\frac{5}{8}$ " dia. spud 18 inches in length.
Base 3" x 6".

