



# Mole-Richardson Co.

**TYPE 2801**  
**200 WATT**  
**MINI-MOLE**  
**SOLARSPOT®**



TYPE 2801 MINI-MOLE SOLARSPOT®  
MOUNTED ON BASE PLATE

## FEATURES

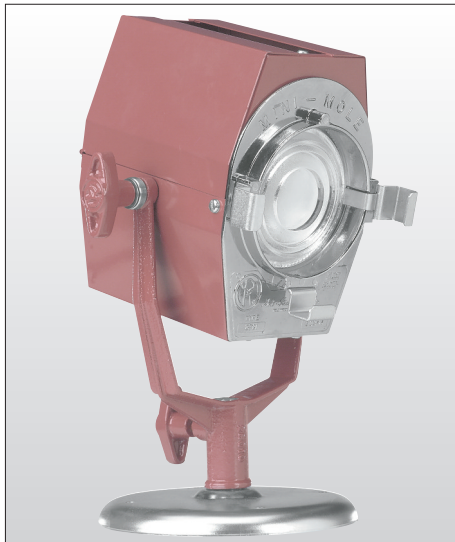
A small, rugged Solarspot® that can be focused from spot-to-flood with an even field. Used in the Motion Picture and Television Studios and Still Photography as a key-light, back-light or kicker. Its small size makes the Mini-Mole adaptable to mounting on a camera, as a camera light. Quartz Tungsten-Halogen globes are available from 100 to 250 watts. The top of the fixture opens up and folds back for easy access to the globe.



# Mole-Richardson Co.

## TYPE 2801

### 200 WATT MINI-MOLE SOLARSPOT®



#### GLOBE TABLE

Base, double contact bayonet candelabra. Burn within 30° of vertical base-down. B-12, G-16½, T-4 and T-8 bulbs; 1⅜" L.C.L.

Watts	Ordering Code	Color Temp. °K	Finish	Volts	Life Hours	Amps
250	ESS	2950	Clear	120	2000	2.1
200	FEV	3200	Clear	120	50	1.7
200	FEV	3200	Clear	220	100	0.9
150	ESP	2900	Clear	120	1000	1.3
100	ESR	2850	Clear	120	750	0.8

Globes not included in price of lamp. See price list for complete details.

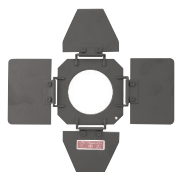
#### SPECIFICATIONS

**HEAD:** Type 2801, 200 watts.  
**RATING:** 120/240 volts A.C. or D.C., 1.7 amps max.—200 watts max.  
**SOCKET:** Double contact bayonet.  
**SWITCH:** Rugged Aluminum Casting, Thru-cord type in cable.  
**CABLE:** Attached 25 feet, Type SO, 3 conductor #18 AWG with 3-prong grounding houseplug. (Other plug available upon request).  
**CONSTRUCTION:** Solid sheet steel and aluminum die casting.  
**YOKE:** Cast aluminum. Fits any standard ⅝" dia. stand spud or ⅝" hanger spud.  
**CONDENSER:** 3" dia. Fresnel lens of Pyrex glass. 12° to 58° field angle.  
**MIRROR:** Alzak aluminum.  
**FOCUSING:** Rotating plastic knob on back.  
**FINISH:** Maroon Powder Coat Enamel.  
**SIZE:** 6¼" x 4" x 6⅛".  
**BASE PLATE:** 5½" dia. sheet steel with standard ⅝" spud. (Included in price of fixture).  
**STAND TOP TO LIGHT CENTER:** 6¼ inches.  
**HEAD WEIGHT:** 4¾ lbs. (w/cable and base plate)

#### ACCESSORIES

- 28032 2-Way Barn Door (2 Leaf)
- 28034 4-Way Barn Door (4 Leaf)
- 28050 Moledisc Diffuser Frame (4⅞" dia.)
- 28090 Molering Diffuser Frame (4⅞" dia.)
- 28060 Snoots (Set of 3)
- 28075 Molesnoot (Five-in-One) Apertures: 1", 1⅜", 1¾", 2⅜" and 2½".
- 28070S Half Single Moledura Scrim (4⅞" dia.)
- 28070D Half Double Moledura Scrim (4⅞" dia.)
- 28071S Single Moledura Scrim (4⅞" dia.)
- 28071D Double Moledura Scrim (4⅞" dia.)
- 280340 Scrim Box
- G135 Scrim Bag
- 500848 Heavy Duty C-Clamp and Adapter
- 2355 Base Plate (Included in price of fixture.)
- 280108 Focal Spot

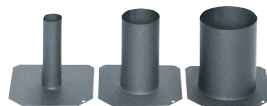
The Type 2801 Mini-Mole can be equipped with larger diffuser clips to handle 5⅞" diffusion retainers. See Type 2351, Type 4821 and Type 3131 bulletins for accessory ordering code number.



Type 2904  
4-Way Light Shield



Type 28050  
Moledisc Diffuser Frame



Type 28060 Snoots (Set of 3)



Type 280108  
Focal Spot

#### PERFORMANCE DATA

Using 200 Watt, 120 volt, 3200° K quartz globe.

Distance Feet	Light Intensity F.C.		Beam Diameter*Feet	
	Maximum Flood	Minimum Spot	Maximum Flood	Minimum Spot
5	90	780	4.8	0.6
10	25	195	9.3	1.1
15	10	90	14.0	1.7

\*Light tapers smoothly at edge of field. Dimensions listed define flat area boundaries at which the intensities are approximately 50% of tabulated intensities at beam center.

